

**POISON**

**KEEP OUT OF REACH OF CHILDREN  
READ SAFETY DIRECTIONS BEFORE OPENING OR USING**

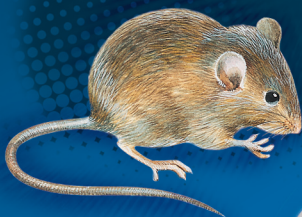
# GENERATION® BLOCK

**SINGLE-FEED RODENTICIDE**

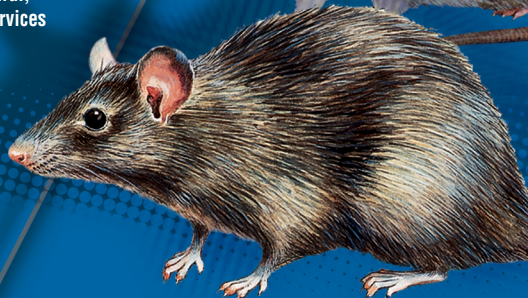
**ACTIVE CONSTITUENT : 0.025 g/kg DIFETHIALONE**

Ready to use bait for the control of rats and mice  
including those resistant to other anticoagulants.

For use in and around agricultural,  
domestic, commercial, public services  
and industrial buildings.



Contains Bitrex®  
A human taste deterrent



**Emergency Phone No.: 0421 946 857**

Manufactured by:  
**LIPHATECH S.A.S.**  
Bonnell BP 3  
47480 PONT DU CASSE  
France

Distributed by:  
**GARRARDS**  
32, Kenworth Place  
BRENDALE QLD 4500  
Ph.: 07 3881 1693

**LIPHATECH**

**NET CONTENTS  
7.5 kg**

## DIRECTIONS FOR USE

### RESTRAINTS

DO NOT apply baits to crops. DO NOT exceed 9 m between bait stations for rats and 3 m for mice. DO NOT place baits in open. DO NOT use this product to control native animals.

SITUATION	PESTS	RATE	CRITICAL COMMENTS
In and around agricultural, commercial, domestic and industrial buildings.	Rats ( <i>Rattus rattus</i> , <i>Rattus norvegicus</i> )	5 to 8 blocks per bait station	Put measured quantity of bait in suitable containers, such as bait trays, or secure bait stations in locations where non-target animals may otherwise access the baits. Protect baits from water where possible. Baiting Strategy – Eliminate as far as practicable all alternative food sources. The feeding behaviour of rats and mice is slightly different. Rats feed in large quantities in few locations whereas mice are more erratic and tend to feed in different places at different times. First determine the infested areas. Where droppings are seen, inside ceiling cavities, along runs are locations more probably frequented by rodents. Bait infested area and remove as much alternative food as possible. Check bait consumption after 3 days. Replace eaten baits. Where a high level of consumption is noticed, place more baits. Remove baits in new locations where there has been no take. Inspect again 3 days later and then once a week until feeding ceases. Normally treatment takes 2 to 3 weeks.
	Mice ( <i>Mus musculus</i> )	1 to 3 blocks per bait station	

**NOT TO BE USED FOR ANY PURPOSE, OR IN ANY MANNER, CONTRARY TO THIS LABEL UNLESS AUTHORISED UNDER APPROPRIATE LEGISLATION.**

#### GENERAL INSTRUCTIONS

Generation® Blocks contain a human taste deterrent which prevents accidental consumption by children. Try not to touch the bait as this may deter rodents from eating it. Please use gloves.

Usually rodents die within 3 to 5 days after eating the bait.

Blocks are intended for use within an integrated rodent management program as the initial “clean out” bait treatment for rodent infestations within structures and nearby areas (within 2 metres). If reinfestation should occur, you can repeat treatment once. For further treatments, it is strongly advised to alternate with a product containing a different active constituent to avoid the development of genetic resistance. Extended use should not be necessary and is not recommended because of possible resistance development and secondary poisoning of rodent predators such as owls.

Implement rodent proofing measures to limit or restrict rodent access to indoor areas or other areas where infestation is identified as a problem. Manage weeds and other vegetation around buildings to minimise the number of available or potential rodent harbourages.

#### PRECAUTIONS

DO NOT allow bait to contaminate foodstuffs or food intended for human or animal consumption. Do not apply bait to crops. Should not be used in areas accessible to children.

#### PROTECTION OF WILDLIFE, FISH, CRUSTACEANS AND ENVIRONMENT

DO NOT contaminate streams, rivers or waterways with the chemical or used containers.

This product is hazardous to pigs, cats, dogs, native wildlife and poultry.

Place baits in locations or bait stations which are inaccessible to other animals and birds.

In locations where native mammals (e.g., possums in roof spaces) may be active, baits should be placed in secure bait stations that only allow the bait to be accessed by the target rodents.

This product is restricted to use in and around buildings (within 2 metres) and within enclosed spaces (e.g., drains).

Actively search for dead and moribund rodents and remove and destroy them when inspecting bait stations, and when removing untaken baits for destruction at the conclusion of baiting. Pest control operators should encourage customers to regularly search for, remove and destroy carcasses and moribund rodents so that dogs, cats or non-target animals DO NOT eat poisoned mice and rats.

#### STORAGE AND DISPOSAL

Store in the closed, original container in a dry, cool, well-ventilated area out of direct sunlight.

Break, crush, puncture, and bury empty containers and dispose of unused bait in a local authority landfill. If no landfill is available, bury the containers or unused bait below 500 mm in a disposal pit specifically marked and set up for this purpose, clear of waterways, desirable vegetation and tree roots. Empty containers and product should not be burnt.

Do not use containers which have held bait for any other purpose.

Dispose of carcasses safely by burning or burying. Do not place dead rats or mice in refuse bins or rubbish tips. Dispose of spoiled baits by placing in plastic bags and putting in garbage. Ensure baits are removed when rodent activity has ceased.

#### SAFETY DIRECTIONS

Poisonous if swallowed. May irritate the eyes. Repeated minor exposure may have a cumulative poisoning effect. Avoid contact with eyes. Do not touch bait. Use scoop or measure. When using the product, wear rubber gloves. If product in eyes, wash it out immediately with water. If on skin and after each baiting, wash hands thoroughly with soap and water. After each day's use wash gloves. Vitamin K1 (Phytomenadione) is antidotal.

#### FIRST AID

If poisoning occurs, get to a doctor or hospital quickly.

#### MATERIAL SAFETY DATA SHEET

Additional information is listed in the Material Safety Data Sheet which can be obtained from the distributor.

#### MANUFACTURER'S WARRANTY AND EXCLUSION OF LIABILITY

This product as supplied is of a high grade and believed to be suitable for any purpose for which it is expressly recommended and must be used in accordance with the Directions for Use given on the label. No responsibility is accepted in respect of the product save those non-excludable conditions implied by any Federal and State legislation or law of a territory.

Generation® is a Registered Trademark of LIPHATECH S.A.S.

Bitrex® is a Registered Trademark of Macfarlan Smith Limited.

**BN                  DOM                  APVMA Approval No. 62694/7.5kgloose/1209**

## DIRECTIONS FOR USE

### RESTRAINTS

DO NOT apply baits to crops. DO NOT exceed 9 m between bait stations for rats and 3 m for mice. DO NOT place baits in open. DO NOT use this product to control native animals.

SITUATION	PESTS	RATE	CRITICAL COMMENTS
In and around agricultural, commercial, domestic and industrial buildings.	Rats ( <i>Rattus rattus</i> , <i>Rattus norvegicus</i> )	5 to 8 blocks per bait station	Put measured quantity of bait in suitable containers, such as bait trays, or secure bait stations in locations where non-target animals may otherwise access the baits. Protect baits from water where possible. Baiting Strategy – Eliminate as far as practicable all alternative food sources. The feeding behaviour of rats and mice is slightly different. Rats feed in large quantities in few locations whereas mice are more erratic and tend to feed in different places at different times. First determine the infested areas. Where droppings are seen, inside ceiling cavities, along runs are locations more probably frequented by rodents. Bait infested area and remove as much alternative food as possible. Check bait consumption after 3 days. Replace eaten baits. Where a high level of consumption is noticed, place more baits. Remove baits in new locations where there has been no take. Inspect again 3 days later and then once a week until feeding ceases. Normally treatment takes 2 to 3 weeks.
	Mice ( <i>Mus musculus</i> )	1 to 3 blocks per bait station	

**NOT TO BE USED FOR ANY PURPOSE, OR IN ANY MANNER, CONTRARY TO THIS LABEL UNLESS AUTHORISED UNDER APPROPRIATE LEGISLATION.**

#### GENERAL INSTRUCTIONS

Generation® Blocks contain a human taste deterrent which prevents accidental consumption by children. Try not to touch the bait as this may deter rodents from eating it. Please use gloves.

Usually rodents die within 3 to 5 days after eating the bait.

Blocks are intended for use within an integrated rodent management program as the initial “clean out” bait treatment for rodent infestations within structures and nearby areas (within 2 metres). If reinfestation should occur, you can repeat treatment once. For further treatments, it is strongly advised to alternate with a product containing a different active constituent to avoid the development of genetic resistance. Extended use should not be necessary and is not recommended because of possible resistance development and secondary poisoning of rodent predators such as owls.

Implement rodent proofing measures to limit or restrict rodent access to indoor areas or other areas where infestation is identified as a problem. Manage weeds and other vegetation around buildings to minimise the number of available or potential rodent harbourages.

#### PRECAUTIONS

DO NOT allow bait to contaminate foodstuffs or food intended for human or animal consumption. Do not apply bait to crops. Should not be used in areas accessible to children.

#### PROTECTION OF WILDLIFE, FISH, CRUSTACEANS AND ENVIRONMENT

DO NOT contaminate streams, rivers or waterways with the chemical or used containers.

This product is hazardous to pigs, cats, dogs, native wildlife and poultry.

Place baits in locations or bait stations which are inaccessible to other animals and birds.

In locations where native mammals (e.g., possums in roof spaces) may be active, baits should be placed in secure bait stations that only allow the bait to be accessed by the target rodents.

This product is restricted to use in and around buildings (within 2 metres) and within enclosed spaces (e.g., drains).

Actively search for dead and moribund rodents and remove and destroy them when inspecting bait stations, and when removing untaken baits for destruction at the conclusion of baiting. Pest control operators should encourage customers to regularly search for, remove and destroy carcasses and moribund rodents so that dogs, cats or non-target animals DO NOT eat poisoned mice and rats.

#### STORAGE AND DISPOSAL

Store in the closed, original container in a dry, cool, well-ventilated area out of direct sunlight.

Break, crush, puncture, and bury empty containers and dispose of unused bait in a local authority landfill. If no landfill is available, bury the containers or unused bait below 500 mm in a disposal pit specifically marked and set up for this purpose, clear of waterways, desirable vegetation and tree roots. Empty containers and product should not be burnt.

Do not use containers which have held bait for any other purpose.

Dispose of carcasses safely by burning or burying. Do not place dead rats or mice in refuse bins or rubbish tips. Dispose of spoiled baits by placing in plastic bags and putting in garbage. Ensure baits are removed when rodent activity has ceased.

#### SAFETY DIRECTIONS

Poisonous if swallowed. May irritate the eyes. Repeated minor exposure may have a cumulative poisoning effect. Avoid contact with eyes. Do not touch bait. Use scoop or measure. When using the product, wear rubber gloves. If product in eyes, wash it out immediately with water. If on skin and after each baiting, wash hands thoroughly with soap and water. After each day's use wash gloves. Vitamin K1 (Phytomenadione) is antidotal.

#### FIRST AID

If poisoning occurs, get to a doctor or hospital quickly.

#### MATERIAL SAFETY DATA SHEET

Additional information is listed in the Material Safety Data Sheet which can be obtained from the distributor.

#### MANUFACTURER'S WARRANTY AND EXCLUSION OF LIABILITY

This product as supplied is of a high grade and believed to be suitable for any purpose for which it is expressly recommended and must be used in accordance with the Directions for Use given on the label. No responsibility is accepted in respect of the product save those non-excludable conditions implied by any Federal and State legislation or law of a territory.

Generation® is a Registered Trademark of LIPHATECH S.A.S.

Bitrex® is a Registered Trademark of Macfarlan Smith Limited.

**BN                  DOM                  APVMA Approval No. 62694/7.5kgloose/1209**